

▶ HOWELLS TREE TOP  
FANTASY: FEATURED IN LUXE  
(SHOWN TO LEFT AND BEHIND)

▶ CATON RESIDENCE

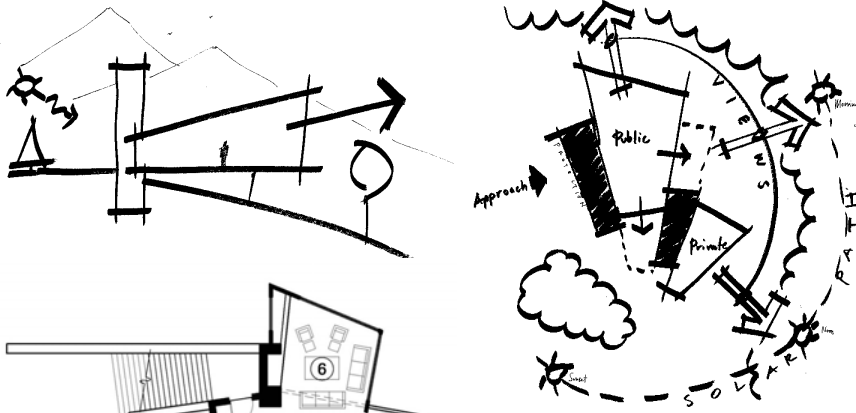
▶ 212 NORTH OAK

▶ TARR RESIDENCE

▶ NO BOUNDARIES: THE  
CASTLE RESIDENCE IN  
HOUSTON, TX

# tommy hein architects news

## caton residence



Main Level

### Main Level

- 1: Private Master Suite
- 2: Kitchen/Dining
- 3: Outdoor living
- 4: Compact Vertical Circulation Core
- 5: Entry
- 6: Open Living

Like a precious stone in the grasp of a sculptural pedestal the Caton residence is art in motion, frozen in a moment of purity.

The objective given to us by Dan and Liz Caton was to create a timeless, sculptural residence that was not only breathtaking but economic, practical and functional as well. We have proposed a slender residence focused on capturing the natural beauty that surrounds it and fully maximizing every square inch that our walls encompass. The primary areas are arranged in a radial pattern, maximizing the views as well as offering privacy. Our team is working closely with **Finbro Construction** on preliminary pricing to assure our clients get the best value possible while maintaining key design details in the process.



## 212 north oak street

The **Rogers residence**, located in the heart of the Telluride historic district, has been a special project for our office. A light carbon footprint and strategic, historic-simplicity were the driving forces behind designing the masses, while a sleek, Scandinavian theme influenced the interior design. The project is currently under construction with builder, **Kevin Croke**



## VALUE ENGINEERING

THA works rigorously with our local contractors and sub-contractors from the early stages of each project to get the best value possible for our clients in our current economic climate.

## castle residence

On the boards, in a location far from the Rocky Mountains, the Castle Residence sits in the quiet neighborhood of River Oaks in Houston, Texas. The clients wanted to bring life to their neighborhood through the use of contemporary styles. Coupled with low maintenance materials and an elegant touch, we've firmly grounded the residence to its site by allowing multiple stone elements to cradle the glass & metal volumes. By elevating the living spaces to the second level, we have achieved vibrant views into the tree canopies with spaces flooded with natural light as well as providing plenty of privacy.



## tarr residence @ sunnyside ranch ®

**Jack and Karen Tarr's** Residence has recently completed the drawing stage and is set to begin construction in summer of 2009. We worked with broker **Bill Fandel** while this property was under contract to help the client visualize design opportunities. The incomparable panoramic views, passive solar, and wind protection inspired an initial concave shape to the residence. Cost analyses drove the design evolution to a final scheme that achieves our design goals in an economic manner and with an angular geometric solution. Surrounded by ponds, the design hugs a knoll set into an aspen grove while evoking rural western architecture. This is a truly collaborative effort typical of THA's process and flexibility.

*Tommy is a Registered Architect who has lived and worked in Telluride since 1992. THA is a passionate group of architects and interior designers dedicated to timeless, sustainable building design.*

*Tommy Hein* ARCHITECTS

108 south oak street po box 3327 telluride colorado  
p 970.728.1220 f 970.728.1294 [www.tommyhein.com](http://www.tommyhein.com)



- ▶ HOWELLS TREE TOP FANTASY: FEATURED IN LUXE (SHOWN TO LEFT AND BEHIND)
- ▶ 507 EAST COLUMBIA
- ▶ 212 NORTH OAK
- ▶ TARR RESIDENCE
- ▶ BHATIA RESIDENCE
- ▶ NO BOUNDARIES: THE CASTLE RESIDENCE IN HOUSTON, TX

# tommy hein architects news

happy holidays!

## 212 north oak street

The **Rogers residence**, located in the heart of the Telluride historic district, has been a special project for our office. A light carbon footprint and strategic, historic-simplicity were the driving forces behind designing the masses, while a sleek, Scandinavian theme influenced the interior design. The project is set to begin construction in the spring of 2009



## castle residence

On the boards, in a location far from the Rocky Mountains, the Castle Residence sits in the quiet neighborhood of River Oaks in Houston, TX. The clients wanted to bring life to their neighborhood through the use of contemporary styles. Coupled with low maintenance materials and an elegant touch, we've firmly grounded the residence to its site by allowing multiple stone elements to cradle the glass & metal volumes. By elevating the living spaces to the second level, we have achieved vibrant views into the tree canopies with spaces flooded with natural light as well as providing plenty of privacy.



## VALUE ENGINEERING

THA works rigorously with our local contractors and sub-contractors from the early stages of each project to get the best value possible for our clients in our current economic climate.

*"When I work on a problem, I never think about beauty, I only think of solving the problem. But when I am finished, if the solution is not beautiful, I know it is wrong."*  
**buckminster fuller**

## bhatia residence

Vineet and Laura Bhatia's new home in Mountain Village is currently under construction with James Hughes Construction. This project explores ideas of the house as a bridge. The effect on the site is lightness on the land with living spaces floating in the trees. We studied many historical and modern precedents of the bridge and have integrated these timeless models into our project. The concept explores bridging access points with public and private living spaces via a passageway over the site's natural draw. The forms flow best when stretched and lengthened from east to west, paralleling the San Sophia range, the natural topography, and the road. This project creates a dynamic experience of height and perspective, while also providing privacy and minimal visual impact from the road. It is expected to be completed in early 2009.



## 507 east columbia

The project commonly referred to as the "Pink House" sits quietly on its lot in the town of Telluride. Situated on a lot and a half, the house makes use of simple forms that allow ample living space tucked beneath a large gable. To achieve the best value possible, our office managed the construction phase as well as every detail that went into the design. The end result frames dramatic views of Bear Creek, Ingram Falls and the ski area.

LOOK FOR IT FEATURED IN THE  
2008/09 HOLIDAY ISSUE OF

**Mountainhomestyle**



## Element 52

- Pure Telluride.

To Lift 8 & Gondola

To Lift 7

Your Front Door

This unique project features 35 exclusive residences with direct ski-in access to the Telluride Ski Resort.

Please visit [www.element52.com/eastcam.jpg](http://www.element52.com/eastcam.jpg) and [www.element52.com/westcam.jpg](http://www.element52.com/westcam.jpg) for up-to-date imagery of the work site in progress with Shaw Builders.

[www.element52.com](http://www.element52.com)



## sunnyside ranch ®

Jack and Karen Tarr's Residence has recently completed the drawing stage and is set to begin construction in spring of 2009. We worked with broker **Bill Fandel** while this property was under contract to help the client visualize design opportunities. Through the design process we have worked with builder **Dennis Overly** for budgeting. The incomparable panoramic views, passive solar, and wind protection inspired the initial concave shape. Cost analyses drove the design evolution to a final scheme that achieves our design goals in an economic manner and with a more geometric solution. Surrounded by ponds, the design hugs a knoll set into an aspen grove while evoking rural western architecture.

*Tommy is a Registered Architect who has lived and worked in Telluride since 1992. THA is a passionate group of architects and interior designers dedicated to timeless, sustainable building design.*

**TommyHein** ARCHITECTS

108 south oak street po box 3327 telluride colorado  
p 970.728.1220 f 970.728.1294 [www.tommyhein.com](http://www.tommyhein.com)



▶ CUSTOM PRIVATE RESIDENCES IN PROGRESS: SUNNYSIDE RANCH, ELK RUN, TELLURIDE, MOUNTAIN VILLAGE

▶ FEASIBILITY AND SITE ANALYSIS STUDIES: IDARADO LEGACY, TOWN AND HARC

▶ CORNERSTONE COLORADO: CUSTOM AND DEVELOPMENT PROJECTS IN THIS NEW GOLF COMMUNITY

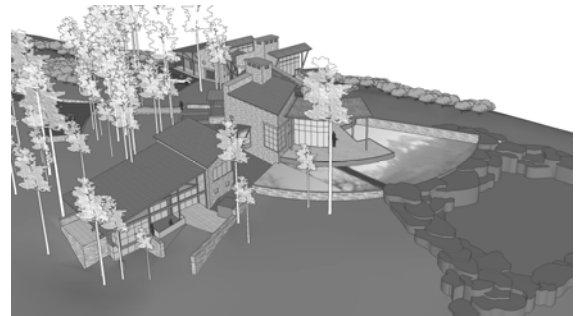
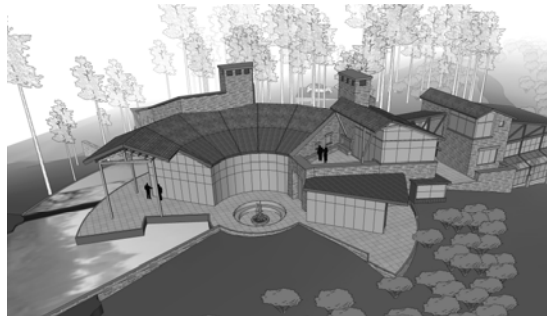
# tommy hein architects news

## sunnyside ranch



**Jack and Karen Tarr's** Residence is currently on our boards. We worked with broker **Bill Fandel** while this property was under contract to help the client visualize design opportunities. Through the design process we have worked with builder **Dennis Overly** for budgeting. The incomparable panoramic views, passive solar, and wind protection inspired the initial concave shape. Cost analyses drove the design evolution to a final scheme that achieves our design goals in an economic manner and with a more geometric solution. Surrounded by ponds the design hugs a knoll set into an aspen grove while evoking rural western architecture.

This is a truly collaborative effort typical of THA's process and flexibility. Construction will begin this summer.



## "NEW ASIAN HOME" booksigning event

We are fortunate to be included in a new book with notable other nationally-recognized architecture firms. A book-signing and sake tasting with the author will be held **AT OUR STUDIO JUNE 27<sup>th</sup> from 1-4pm.**

*"We pierce doors and windows in making a house, and it is these spaces, where there is nothing, that the usefulness of the house depends. Thus taking advantage of what is, we recognize the usefulness of what is not."*

**lao tzu**



## elk run

**Tim and Lynn Morris'** Stone Cottage in Elk Run is a project recently completed in our office. This residence will begin construction late 2008. Morris Cottage was unique in that it required a building envelope relocation with San Miguel County to optimize the panoramic views of the Wilson Range. This project is very compact at 5,500 square feet and includes a large program consisting of billiards, a wine room, and an interesting bunk solution. All rooms have views of Wilson and Sunshine Peaks.

A steep gable form with flared eaves seemed the most appropriate introduction from the road while becoming the focal element of a mysterious, charming entry courtyard enclosed by a low stone wall. Continuing on an indigenous stone path that appears to have been laid years ago, we cross a bridge over the babbling brook to the arched-top entry door. From the living room we overlook a serene trout pond with Wilson Peak in the backdrop.

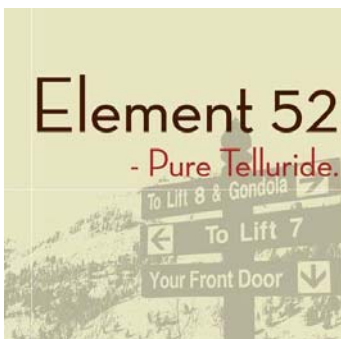


**OC10-15** is a courtyard scheme inspired by western ranch compounds. This is our second house at cornerstone with **Tom Mussleman, Steve Parker and Peter Kivlin**. We have developed great trust and a strong working relationship with the Cornerstone Design Review Board and look forward to many more projects there! The golf course is opening all 18 holes this summer, we look forward to seeing you at the Grand Opening with Greg Norman in June. Please stop by and visit OC13-09 (image below) that is currently under construction.

[www.CORNERSTONECOLORADO.com](http://www.CORNERSTONECOLORADO.com)



look for our  
feature in  
**LUXE**  
this summer



We recently completed work on Element 52 with **Steve and Ralph Finger, Steve Catsman**. Our largest project to date at 120,000 square feet of luxury residential town-homes and condominiums, we have entered a new stratosphere of design and coordination with large Denver consulting firms and complex code solutions. We hope this will allow us to compete for larger projects in the future. It is now under construction and **has opened up our schedule to focus on other new work.**

[www.element52.com](http://www.element52.com)

*Tommy is a Registered Architect who has lived and worked in Telluride since 1992. THA is a passionate group of architects and interior designers dedicated to timeless, sustainable building design.*

*TommyHein* ARCHITECTS

108 south oak street po box 3327 telluride colorado  
p 970.728.1220 f 970.728.1294 [www.tommyhein.com](http://www.tommyhein.com)